



UNIVERSITI SAINS MALAYSIA

USM

APEX™

USM

SAINS@KL  
UNIVERSITI SAINS MALAYSIA@KUALA LUMPUR

# HOW TO APPLY FOR A STUDENT PASS/VISA FOR NEW STUDENT @SAINSKL

1

## SUBMIT APPLICATION THROUGH EMGS [EDUCATION MALAYSIA GLOBAL SERVICES]

- Document needed : \*Offer Letter , \*Detail Page Passport, Academic Transcript/Certificates , \*Photo (with White Background), \*EMGS Payment Fees (MYR 1900 – MYR 2500) \*Health Declaration Form



2

## EMGS APPROVAL LETTER (ONLINE REGISTRATION) – 32%

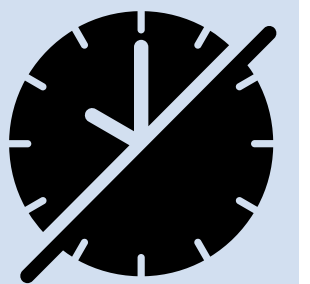
- If complete documents & payment, final verification process approximately 10-14 working days



3

## REQUEST FOR DECLARATION LETTER (ACCOMMODATION /ONLINE CLASSES) – 35%

- Issued by Visa Office USM Sains@KL for the purpose of e- VAL approval



4

## E-VAL APPROVED BY IMMIGRATION MALAYSIA (TO ENTER MALAYSIA WITHIN 6 MONTHS) –75-80%

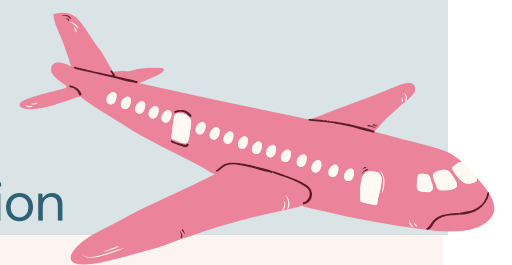
-Security check & endorsement from Immigration Department approximately 7-10 working days,  
-SEV - Single Visa Entry (from Malaysia Embassy)  
-VOA - Visa On Arrival (without Embassy)  
-TA - Travel Authorization  
-Take RT\_PCR COVID Test (7 Days)  
-HSO (<https://hso.moh.gov.my/>) Complete the Return to campus form ([shorturl.at/anuHVg](https://shorturl.at/anuHVg)) & inform Mr. Hafezie (whatapps +60123905711)



5

## TRAVEL TO MALAYSIA

- Undergo quarantine ( 14 days) at Home or Kuala Lumpur quarantine hotel assigned by the Ministry of Health ( quarantine fees pay prior arrival via link : <https://safetravel.myeg.com.my/>  
- Remove wristband at Government clinic  
- Arrive USM Sains@KL campus & proceed with medical check up/ registration



6

## STUDENT PASS APPLICATION – 90%

- Submit a copy of entry pass, passport , medical report & insurance cover note\*  
\*Only for those who choose Berjaya Sompo insurance.  
- Pay RM 30 (for stamping, endorsement letter, courier services)



7

## STUDENT PASS ISSUED BY IMMIGRATION /IKAD/INSURANCE CARD – 100%

- Collect passport at USM Sains@KL.  
- Collect i-card & insurance card after 7 -14 days

